

REFLOMAX GLODIAN™ DOT-C2

Conspicuity Tape Rigid Grade

Technical Datasheet &
Application Instruction

22/Mar/2019
Page 1 of 4

Technical Datasheet

Description

REFLOMAX GLODIAN™ DOT-C2 is intended for safety marking tape for trucks and trailers with rigid surfaces for use on the sides and rear of all kind of vehicles. It provides excellent reflectivity which enhances night time safety and it is designed for easy application and durability. Glodian™ DOT-C2 perfect solution for various type of trucks and trailers with both metalized and sealed (air-backed). Also it is provided with the DOT-C2 certification mark which complies with FMVSS108. REFLOMAX GLODIAN™ DOT-C2 may help reduce accidents and prevent injuries.

Product Construction

REFLOMAX GLODIAN™ DOT-C2 rigid grade is composed of cube corner (retroreflective microprism) and are formed by hard polymer on flexible, UV-stabilized polymeric film which applied edge sealed technology.

- Provides Edge seal for air-backed tape
- Provides exceptional reflectivity at dawn, dusk, night and day
- Custom logos available to build brand identity strong
- Kiss-cut & Pre-cut Available
- All side sealed technology applied for Kiss-cut & Pre-cut product to prevent water/dust/chemical substances penetration.
- Providing 10 years of field performance

Adhesive

Clear, solvent-based, permanent adhesive

Retroreflective Performance

The coefficients of retroreflection (R_A) shall be determined in accordance with ASTM E810, and per ASTM E810 the values of all rotation are determined the R_A .

The values in below table are minimum coefficients of retroreflection expressed in candelas per lux per squaremeter (cd/lux/m^2)

The minimum Coefficient of Retroreflection (R_A)

Color	Observation Angles	Entrance Angle	R_A
White	0.2°	-4°	250
		30°	250
		40°	60
	0.5°	-4°	65
		30°	65
		40°	15
Red	0.2°	-4°	60
		30°	60
		40°	15
	0.5°	-4°	10
		30°	10
		40°	4

REFLOMAX CO., LTD.

All rights reserved.

Reflomax reserves the right to make changes in specifications and/or to discontinue any product at any time without notice or obligation and will not be liable for any consequences resulting from the use of this publication.

REFLOMAX GLODIAN™ DOT-C2

Conspicuity Tape Rigid Grade

Technical Datasheet &
Application Instruction
22/Mar/2019
Page 2 of 4

Color

REFLOMAX GLODIAN™ DOT-C2 rigid grade is printed in white/red pattern(6"/6",7"/11") The color complies with the requirements of FMVSS108 standard.

Color	Type	Item Code
Red 6 inch / White 6 inch(Alternating Pattern)	Air-backed	VC-6H
Red 11 inch / White 7 inch(Alternating Pattern)	Air-backed	VC-7H
Red 6 inch / White 6 inch(Alternating Pattern)	Metalized	VC-6M
Red 11 inch / White 7 inch(Alternating Pattern)	Metalized	VC-7M

Physical Properties

The following technical information should be considered typical only and should not be used for specification purposes.

Property	FMVSS 108 Requirement	REFLOMAX GLODIAN™ DOT-C2 Typical Value
Thickness	NA	Air-backed Type : 405~445m Metalized Type : 300~340m
Gloss ASTM D523 @85°	NA	100
Dimensional Stability ASTM D4956	Less than 1/8" change on 9x9" panel	Pass
Flexibility Wrap around 0.125" mandrel@32°F(0°C)	No Cracking	Pass
Min. Application Temperature	NA	Pass
High Pressure Wash Test 45° angle, 1200psi, 8" distance	NA	15°C(60°F)
Adhesion 90° Hanging Weight ASTM D4956	Less than 2" movement	Pass
Peel Adhesion 12 inch/minute, 180° peel angle	NA	Pass
Chemical Resistance	NA	Degreased aluminum : 0.94kg/cm
Corrosion Resistance ASTM B-117 5% Salt spray for 1,000hours	NA	No effect
Impact Resistance Room Temperature 100in-lb, 5/8 inch tip	No damage outside impact	Pass
Impact Resistance Cold temperature 60in-lb, 5/8 inch tip at -20°C(68°F)	No damage outside impact	Pass

REFLOMAX CO., LTD.

All rights reserved.

Reflomax reserves the right to make changes in specifications and/or to discontinue any product at any time without notice or obligation and will not be liable for any consequences resulting from the use of this publication.

REFLOMAX GLODIAN™ DOT-C2

Conspicuity Tape Rigid Grade

Technical Datasheet &
Application Instruction
22/Mar/2019
Page 3 of 4

Photometrics

REFLOMAX GLODIAN™ DOT-C2 conspicuity tape series meets the applicable daytime color requirements for FMVSS 108, DOT-C2 and ASTM D4956:2013

The four pairs of chromaticity coordinates determine the acceptable color in terms of the CIE 1931 Standard Colorimetric System measured with CIE Standard illuminant D65.

Color	Chromaticity Coordinates*									
	1		2		3		4		Daytime	
	x	y	x	y	x	y	x	y	Min	Max
White	0.303	0.300	0.368	0.366	0.340	0.393	0.274	0.329	27	-
Red	0.648	0.351	0.735	0.265	0.629	0.281	0.565	0.346	2.5	15

Application Instructions

REFLOMAX GLODIAN™ DOT-C2 can be applied to truck and trailers. In order to apply proper adhesion between tape and the cleand substrate, it must be installed when temperature is between 15°C and 38°C(64°F~100°F).

Before installation, all surface must be considered contaminated and must be cleaned prior to application. Wash the surface with detergent and water to remove dirt and road film. Use a clean cloth with isopropyl alcohol to wipe the surface in one direction to avoid spreading contamination. Freshly painted surfaces should be dried for at least 3 weeks and completely cured. The compatibility of the selected lacquer with the paint must be tested by the user before using the material. Self-adhesive reflective materials can only be used for dry applications. If the tensile strength of the material is low, the removal of the reflective film may be more difficult. After that immediately dry surface with a clean absorbant paper towel for better adhesion.

Installation

1. Clear surface properly
2. Do not overlap marking.
3. Apply only on flat surface.
4. Ensure that the tape is applied without tension.
5. Installing underneath belts or buckles is not recommended.

Shelf Life

Must store in a cool dry area, store at room temperature 18°~25°C(64°F~77°F) and 30%~50% relative humidity and must be used within 1 year after date of receipt. Store rolls in their original cartons.

Maintenance

Regular cleaning is recommended for maximum performance. The following cleaning methods are recommended.

- 1) Wash with sponge, cloth or soft brush using water and detergent.
- 2) Automatic truck/trailer wash or standard high-pressure hand spray:
 - Maximum Pressure : 1,200psi
 - Maximum wash temperature : 60°C(140°F)
 - Water jets must be a minimum of 30.48cm(12") from the conspicuity tape
 - Spray water jets at no greater angle than 45°

Size & Packing

Product size : 50mm(2") x 50YD per 1roll as standard.

Packing : 430mm x 410mm x 260mm per 1carton(contains 16rolls)

Gross weight : About 19kgs(42LBs) per 1carton.

REFLOMAX CO., LTD.

All rights reserved.

Reflomax reserves the right to make changes in specifications and/or to discontinue any product at any time without notice or obligation and will not be liable for any consequences resulting from the use of this publication.

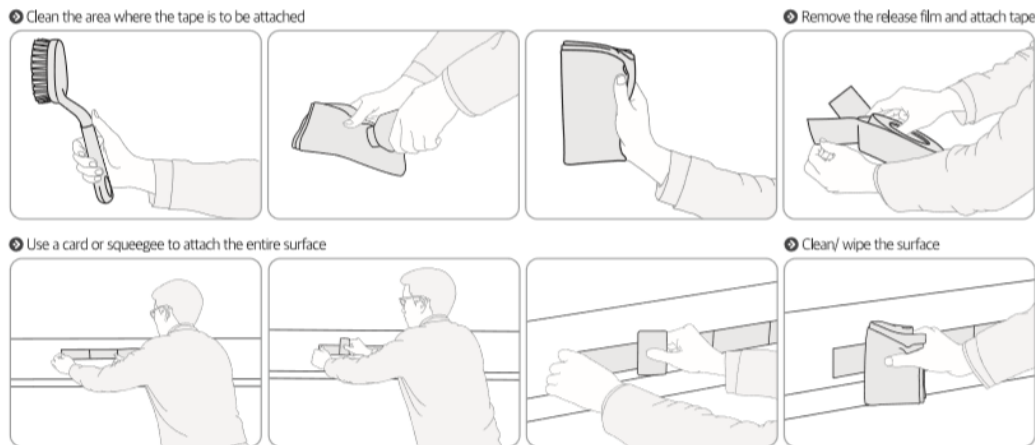
REFLOMAX GLODIAN™ DOT-C2

Conspicuity Tape Rigid Grade

Technical Datasheet &
Application Instruction

22/Mar/2019
Page 4 of 4

How to install



IMPORTANT NOTICE

General Performance Consideration

Durability can be reduced if recommended techniques are not followed:

- Failure to cut markings around rivets, seams and body are panels.
- Improper use of high pressure cleaning
- spillage of chemicals or solvents.
- Improper application or surface preparation.

Except for the limited remedy stated above, and except where prohibited by law, Reflomap will not be liable for any loss or damage arising from any Reflomap product, whether direct, indirect, special, incidental or consequential damages(including but not limited to lost profits, business or revenue in any way), regardless of the legal theory asserted including warranty, contract, negligence or strict liability.

Warranty

REFLOMAX GLODIAN™ DOT-C2 series("Product") are warranted to be free of defects in materials and manufacture at the time of shipment and to meet the specifications stated in this product guidance. If the Product is proven not to have met the Warranty on its shipment date, then a buyer's exclusive remedy, and Reflomap's sole obligation, at Reflomap's option, will be a refund or replacement of the Product.

Before use, user must determine the suitability of the product for its intended use and user must assume all risks and responsibilities in this regard. All question of warranty and liability claims relating to this product are subjected to the terms of the sale subject where applicable to the prevailing law.

No warranty is given for any purpose other than those listed in the Technical Data Sheet, or for purposes not handled in accordance with Reflomap's processing and handling instructions. The durability of the product may depend on a variety of factors including recommended application guidelines, geographical areas, exposure conditions, and product maintenance and completion indicators. Reflomap is not responsible for product failure due to improper surface treatment. Please refer to the full warranty document available at www.reflomap.com for detailed information.

GLODIAN™ is a registered trademark of REFLOAMX CO., LTD.

REFLOMAX CO., LTD.

All rights reserved.

Reflomap reserves the right to make changes in specifications and/or to discontinue any product at any time without notice or obligation and will not be liable for any consequences resulting from the use of this publication.